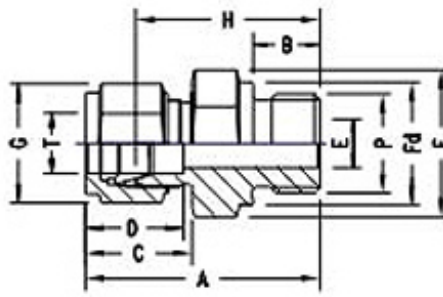




## Male Connector RP Type



### METRIC OD Tubes x Male ISO\* Parallel Threads - RP

T Tube OD	P ISO Male	Fluid Fit Part No.	A	B	C	D	E min.	F A/F	Fd A/F	G	H
3	1/8	MMC 3-2Rp	30.0	7.1	15.3	12.9	2.4	14	13.8	11	23.4
3	1/4	MMC 3-4Rp	35.3	11.2	15.3	12.9	2.4	19	18.0	11	28.7
6	1/8	MMC 6-2Rp	32.3	7.1	17.7	15.3	4.8	14	13.8	14	24.9
6	1/4	MMC 6-4Rp	37.6	11.2	17.7	15.3	4.8	19	18.0	14	30.2
6	3/8	MMC 6-Rp	38.9	11.2	17.7	15.3	4.8	22	21.8	14	31.5
6	1/2	MMC 6-8Rp	44.7	14.2	17.7	15.3	4.8	27	26.0	14	37.3
8	1/8	MMC 8-2Rp	33.2	7.1	18.6	16.2	4.0	14	13.8	16	25.7
8	1/4	MMC 8-4Rp	38.5	11.2	18.6	16.2	6.4	19	18.0	16	31.0
8	3/8	MMC 8-6Rp	39.8	11.2	18.6	16.2	6.4	22	21.8	16	32.3
8	1/2	MMC 8-Rp	45.6	14.2	18.6	16.2	6.4	27	26.0	16	38.1
10	1/4	MMC 10-4Rp	39.4	11.2	19.5	17.2	5.9	19	18.0	19	31.8
10	3/8	MMC 10-6Rp	40.6	11.2	19.5	17.2	7.6	22	21.8	19	33.0
10	1/2	MMC 10-8Rp	46.5	14.2	19.5	17.2	7.9	27	26.0	19	38.9
12	1/4	MMC 12-4Rp	42.6	11.2	22.0	22.8	5.9	22	18.0	22	32.5
12	3/8	MMC 12-6Rp	43.1	11.2	22.0	22.8	7.9	22	21.8	22	33.0
12	1/2	MMC 12-8Rp	49.0	14.2	22.0	22.8	9.5	27	26.0	22	38.9
12	3/4	MMC 12Rp	52.8	15.7	22.0	22.8	9.5	35	32.0	22	42.7
16	3/8	MMC 16-6Rp	43.9	11.2	22.0	24.4	7.9	24	21.8	25	33.8
16	1/2	MMC 16-8Rp	49.0	14.2	22.0	24.4	11.9	27	26.0	25	38.9
20	1/2	MMC 20-8Rp	50.5	14.2	22.0	26.0	11.9	30	26.0	28.5	40.4
20	3/4	MMC 22-12Rp	52.3	15.7	22.0	26.0	15.9	35	32.0	28.5	42.7
22	3/4	MMC 20-16Rp	52.3	15.7	22.0	26.0	15.9	35	32.0	32	42.7
22	1	MMC 25-12Rp	55.3	18.3	22.0	26.0	18.3	41	39.0	32	45.2
25	3/4	MMC 20-16Rp	57.5	15.7	26.5	31.3	15.9	35	32.0	38	45.2
25	1	MMC 20-12Rp	60.1	18.3	26.5	31.3	19.8	41	39.0	38	47.8

## **Fluid Fit Engineers**

Unit 11, Pereira Compound, Near Vaishali Nager, S. V. Road

Mumbai-400 102, Maharashtra (India)