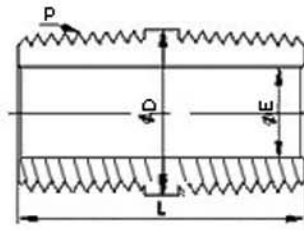




Close Nipple



Close Nipple

P-NPT Size (in.)	Basic Ordering Number	L	D	E Minimum Opening
1/16	PCN-NS1	19.1	7.9	3.0
1/8	PCN-NS2	19.1	10.3	4.8
1/4	PCN-NS4	28.4	13.7	7.1
3/8	PCN-NS6	28.4	17.1	9.7
1/2	PCN-NS8	38.1	21.3	11.9
3/4	PCN-NS12	38.1	26.7	15.7
1	PCN-NS16	47.8	33.4	22.4

Fluid Fit Engineers

Unit 11, Pereira Compound, Near Vaishali Nager, S. V. Road

Mumbai-400 102, Maharashtra (India)